

A PICTORIAL LOOK AT THE OTHER KEITH NELSON

This is the image
that students have.
The reality is
different



ORIGINS: His early years were spend in Oldham, UK:



then an industrial mill town in the NW of
England

THE FORMATIVE YEARS: Spent in East Anglia in England
getting a taste for

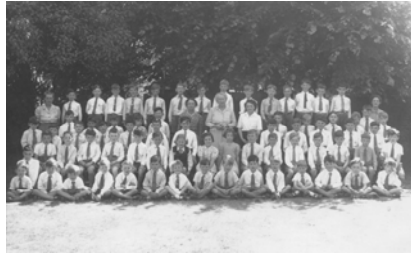
The sea

Study (just a little!)

Scouting



Weekends at Felixstowe



Primary school



15th Ipswich Sea Scouts

The Outdoors

Exploration

Women



*Leading a Scout trip
to the Alps, 1963*



Sahara Expedition, 1964



Marriage to Christine Baker, 1968

NOW: Spare time spent.....

With Family



Flying
[above the water]



Sailing
[on the water]



Diving
[below the water]



Traveling
[near the water]



.... and getting beaten on the squash court!

